

***DOORHAN®***

**pete** بي تي



# **AUTOMATION SYSTEMS**

**SAFETY · DURABILITY · RELIABILITY · EFFICIENCY**

[www.peteksa.com](http://www.peteksa.com)

# OPERATORS FOR RESIDENTIAL SECTIONAL DOORS



□ Sectional-500CE/DIY-500



□ Sectional-750CE/1000CE/1200CE/Fast-750CE

## WIDE MODEL RANGE

Allows you to automate residential sectional doors of almost any size

## EASY OPERATION

Built-in illumination lamp turns on automatically upon opening/closing of the door

## QUICK INSTALLATION

Operators can be easily installed on the guide and mounted to the ceiling

## LONG SERVICE LIFE

Smooth start and stop feature, ensures a longer service life

# OPERATORS FOR INDUSTRIAL SECTIONAL DOORS



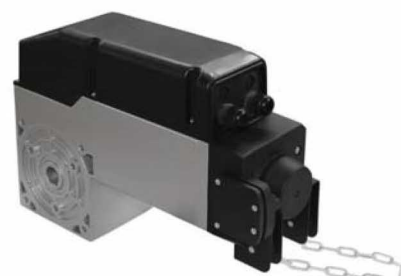
□ Shaft-20



□ Shaft-30IP65/60IP65



□ Shaft-50



□ Shaft-120

## HIGH EFFICIENCY

The “oil bath” technology ensures a constant operation during heavy operating loads

## POSSIBILITY TO CONNECT VARIOUS ACCESSORIES

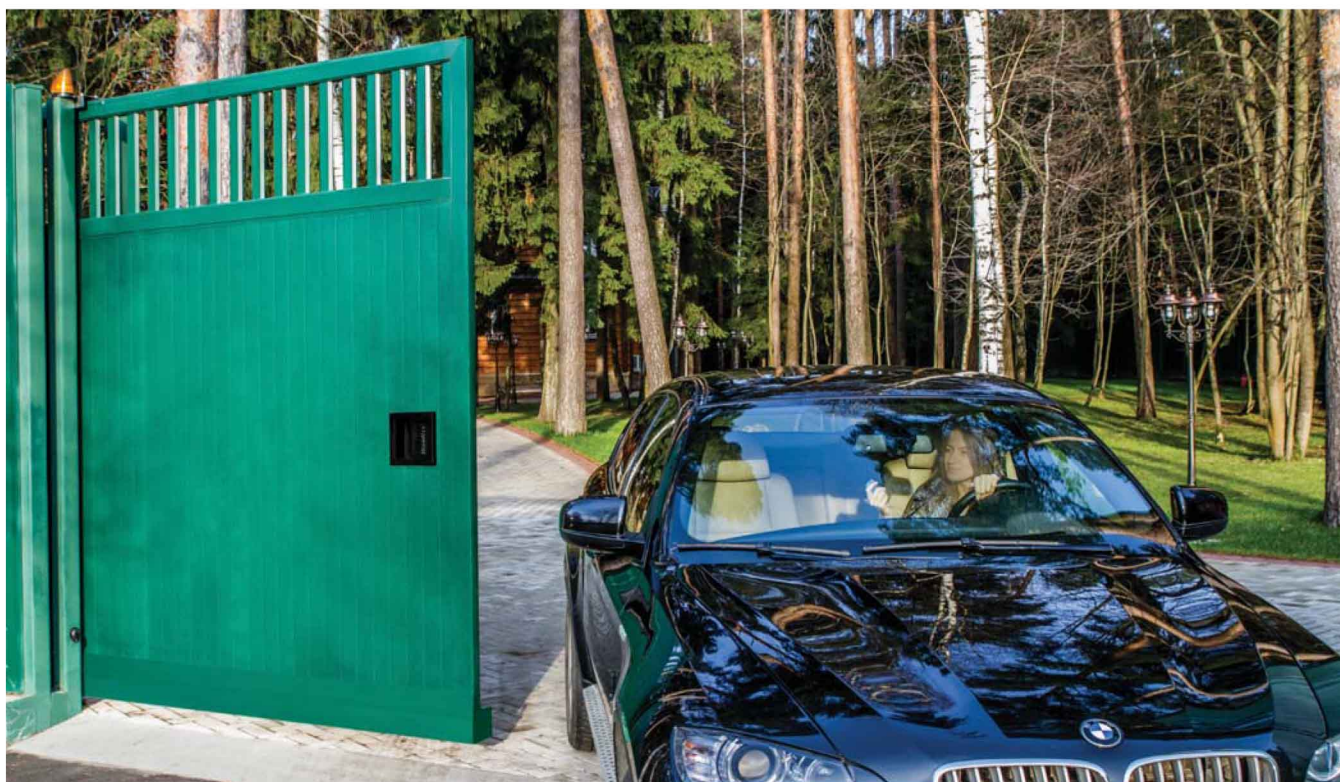
Ensures a comfortable and a safe door operation

## CONVENIENT OPERATION

Operators with built-in control unit are safe and easy to control remotely



# OPERATORS FOR SLIDING GATES



□ Sliding-300/800



□ Sliding-1300/2100

## WIDE APPLICATION

Sliding operators are designed for both, residential and industrial sliding gates

## LOCK RELEASE

Convenient lock release key allows the gate to be operated during power failure or emergency

## DURABILITY

Mechanical gear motor, running in “oil bath”, ensures a reliable operation during heavy operating loads and extends its service life

# OPERATORS FOR SWING GATES



**Linear operators**

**Arm operator**



□ Swing-2500

□ Swing-3000/5000

□ Arm-320

## OPTIMAL SOLUTION

Linear operators are an optimal solution to automate residential as well as industrial swing gates, with medium to high intensity use

## WIDE APPLICATION

Arm-320 is designed for swing gates as well as for residential pass doors

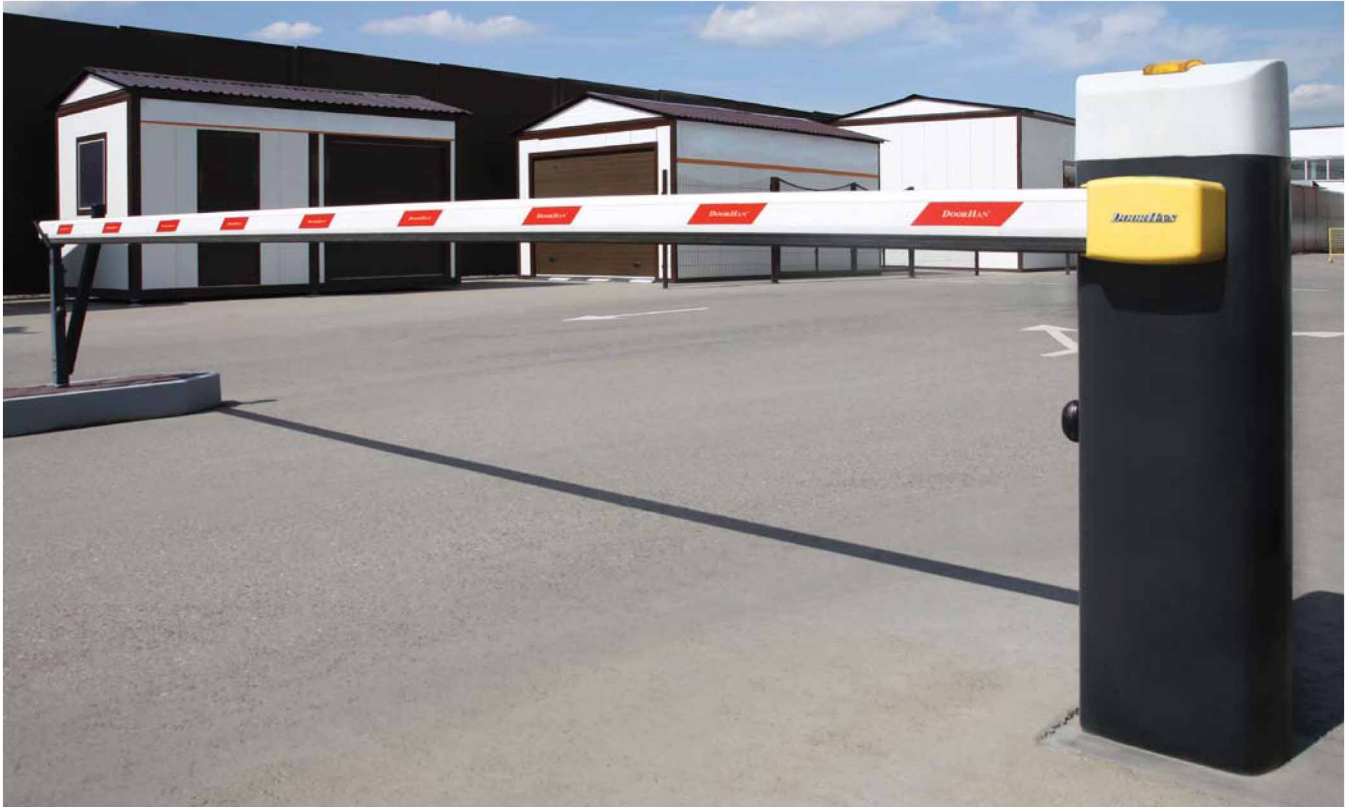
## CONVENIENT INSTALLATION

Linear operators can be easily installed on narrow columns. Fastening to the leaf and post is carried out by two brackets

## EASY INSTALLATION

Arm operator is easily installed on upper or lower part of the post and door leaf and excludes the need of welding

# BARRIERS



## SECURED ACCESS SOLUTION

Barriers are intended for vehicle access control; capable of spanning openings of up to 6 meters

## LONG WORKING LIFE

Robust gear motor construction provides a smooth and a consistent operation even in the most demanding environments

## RESISTANCE

Anti-vandal steel body provides protection against forced opening; along with its reinforced elements, DoorHan barriers ensure a constant operation during extreme weather conditions

## SAFETY

Lightweight and durable aluminum boom is equipped with light-reflecting tape and rubber pads

## DURABILITY

Barriers have a longer service life, due to the application of limit switches

## RELEASE CONTROL FEATURE

Release mechanism ensures a manual operation of the barriers during power failures and emergency



# ACCESSORIES



## **A WIDE ACCESSORY RANGE**

Additional automation accessories guarantee a comfortable and a safe use

## **RELIABILITY**

Remote controls, photocells, external receivers, keypads and other accessories are highly reliable

## **MODERN DESIGN**

All access control and safety devices feature a stylish appearance, elegant shape and are manufactured using the latest technologies

## **WIDE APPLICATION**

All access control devices are designed for DoorHan automation systems and are also suitable with products of different manufacturers

## **MAXIMUM CONVENIENCE**

DoorHan automation accessories are easy to program and provide a secured and controlled operation of all automation systems

## **EASY PROGRAMMING**

All settings are made quickly and aren't time consuming. Besides, DoorHan accessories have a compact design and do not take up much space



☐ Transmitter 2



☐ Transmitter 4



☐ Transmitter Premium



☐ Lamp-LED



☐ Photocells



☐ Keycode



☐ Keyswitch



☐ Keypad



# TECHNICAL SPECIFICATIONS

## Operators for residential sectional doors

Model	Sectional DIY-500	Sectional-500	Sectional-750	Fast-750	Sectional-1000	Sectional-1200
Supply voltage, V/Hz	230 / 50/60					
Maximum power consumption, W	100	100	150	150	250	300
Force, N	500	500	750	750	1 000	1 200
Door speed, m/sec	0.14	0.14	0.1	0.1–0.18	0.1	0.1
Maximum door area, m <sup>2</sup>	8	8	10	10	13	16
Maximum opening height, mm	2 300	2 600	2 800	2 800	3 400	3 800
Intensity, %	50					
Temperature range, °C	–20 to +55					
Degree of protection	IP20					

## Operators for industrial sectional doors

Model	Shaft-20	Shaft-30IP65	Shaft-50	Shaft-60IP65	Shaft-120
Supply voltage, V/Hz	230 / 50/60, 1 phase			400 / 50/60, 3 phases	
Maximum power consumption, W	300		370	350	700
Torque, Nm	20	30	50	60	120
Shaft speed, RPM	25	32	24	32	22
Maximum door area, m <sup>2</sup>	12	18	25	28	40
Intensity, %	30	50	50	60	65
Temperature range, °C	–20 to +55		–20 to +50	–20 to +55	
Degree of protection	IP20	IP65	IP54	IP65	IP44

## Operators for sliding gates

Model	Sliding-300	Sliding-800	Sliding-1300	Sliding-2100
Supply voltage, V/Hz	230 / 50/60			
Maximum power consumption, W	130	250	550	750
Gate speed, m/min	9	12	10	
Maximum gate weight, kg	300	800	1 300	2 100
Intensity, %	50		70	
Temperature range, °C	−20 to +55		−40 to +55	
Degree of protection	IP54			

## Operators for swing gates

### Linear operators

Model	Swing-2500	Swing-3000	Swing-5000
Supply voltage, V/Hz	230 / 50/60		
Maximum power consumption, W	150		
Maximum leaf weight, kg	350	400	500
Maximum leaf length, m	2,5	3	5
Intensity, %	50		
Temperature range, °C	–20 to +55	–40 to +55	
Degree of protection	IP44	IP54	

## Arm operator

Model	Arm-320
Supply voltage, V/Hz	230 / 50/60
Maximum power consumption, W	150
Torque, Nm	320
Maximum leaf weight, kg	400
Maximum leaf length, m	3
Intensity, %	30
Temperature range, °C	-20 to +55
Degree of protection	IP54

## Barriers

Model	Barrier-4000	Barrier-5000	Barrier-6000
Supply voltage, V/Hz	230 / 50/60		
Maximum power consumption, W	220		
Maximum boom length, mm	4 000	5 000	6 000
Boom type	Aluminum: oval, round, oval with LED light		
Overall dimensions, mm	270x1015x140		
Number of springs	1	2	2
Opening time, sec	4	5	6
Intensity, %	70		
Temperature range, °C	-40 to +55		
Degree of protection	IP54		