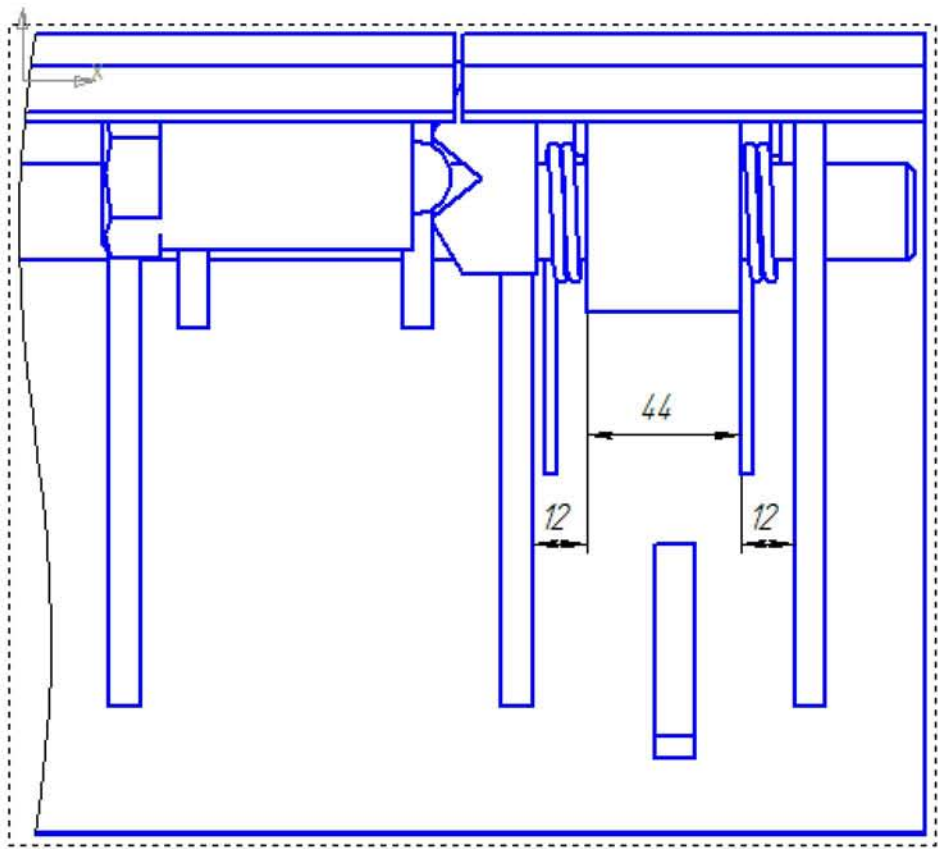


1. Pull out the pin from the shaft, and move the shaft to the middle of the dock leveler, release the segment lip out.



2. For the damaged dock leveler, Weld the bushings on the segment lips that Victor will bring to you as below. Then go to Item 3.
For another 3 dock levelers, Cut the bushing to 44mm length, smooth it.





3. Put the 1st spring on the shaft, assemble the segment lip vertically.





4. Tight the 2nd spring legs with small cables, install on the shaft.
Beat the shaft on the other side until the shaft can support all the lips.



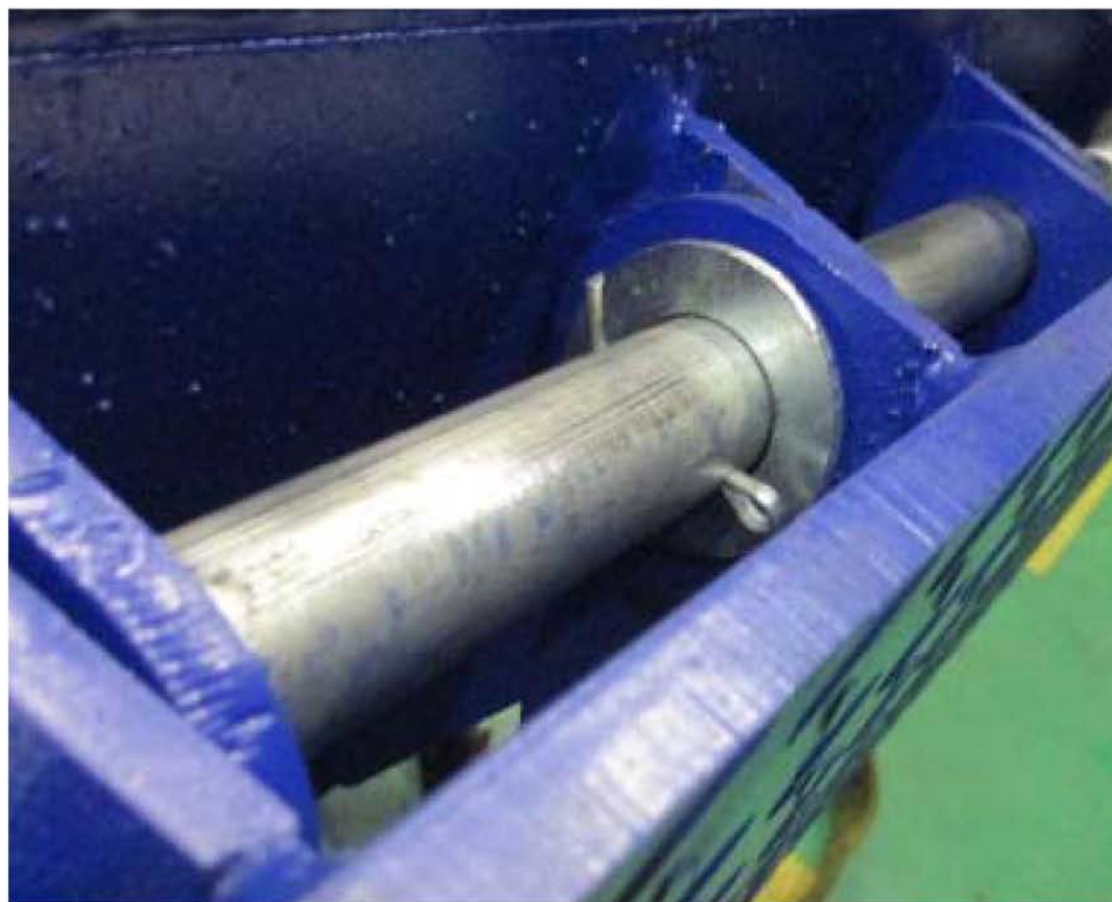




5. Release the cable after installation.



6. Install the pin back into the shaft, fix it.

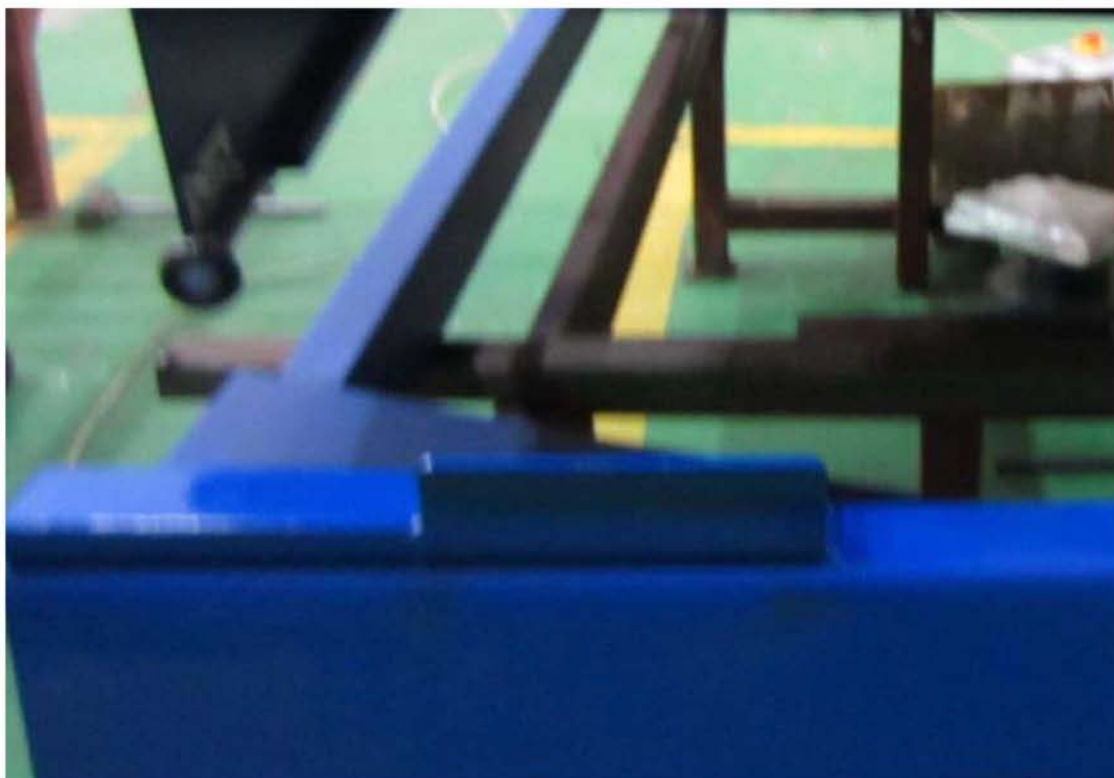
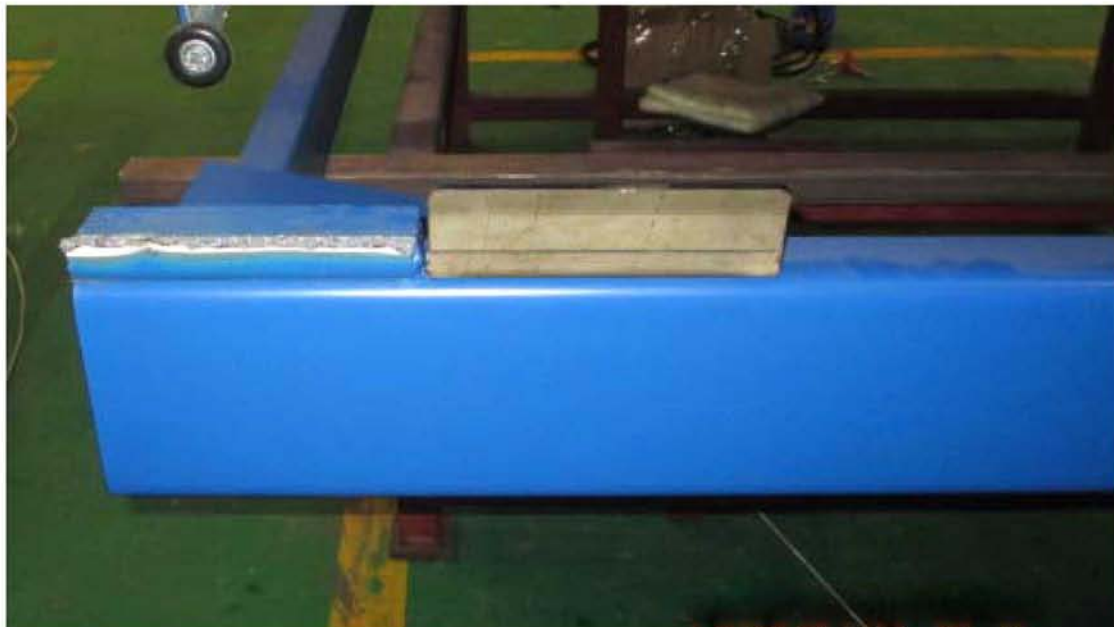


7. Follow the same way on the other side of dock leveler. Then open the lips, fall down the segment lip, it will be a little angled.



8. In order to move the supports to the center of the dock leveler, Cut the supports of the lips, smooth and install another supports just beside the cut ones. Paint the supports.





Professional Equipment (PETE), PO Box 3448, Iskan-1, Near Water Tank ,
Al Difa Area, Riyadh - 14424, Kingdom of Saudi Arabia,Telefax : 966 11 4989214,
Mob : 966 54 5603773, Email : info@peteksa.com

www.peteksa.com